

Fire Extinguisher Explosion on DZ 28

Friday Nightshift 7th May 2010

D Crew





Bracket bolt head appears to have created wear area resulting in fatigue cracking

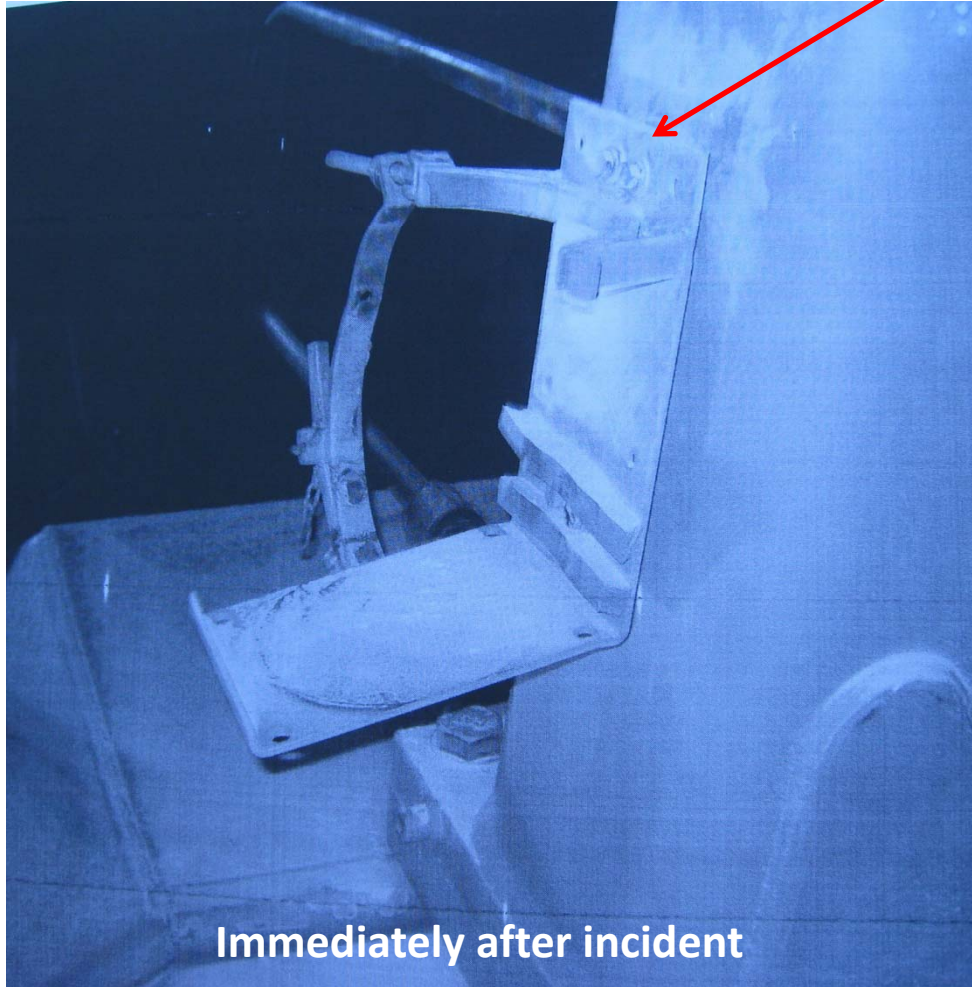


Bracket strap wear area

Second extinguisher showing fatigue cracking

Actual Bracket Involved

Arrows point to bolt location

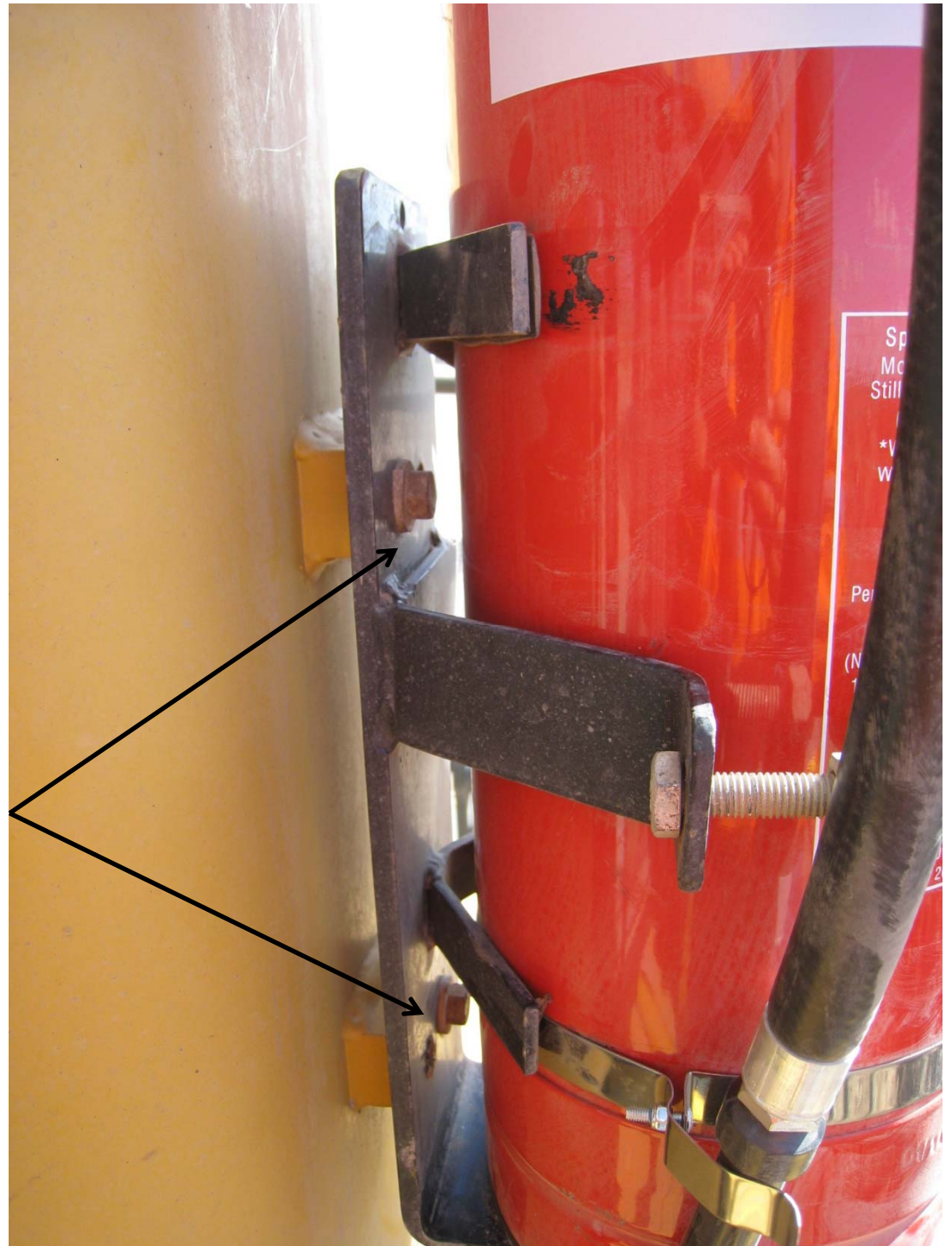




Fatigue cracking

Third extinguisher showing wear from bracket strap rubbing

Alternate bracket design showing
adequate gap between bolt heads and
extinguisher



Burton – Checks
found this FE with a
corroded base –
another potential
bomb!

